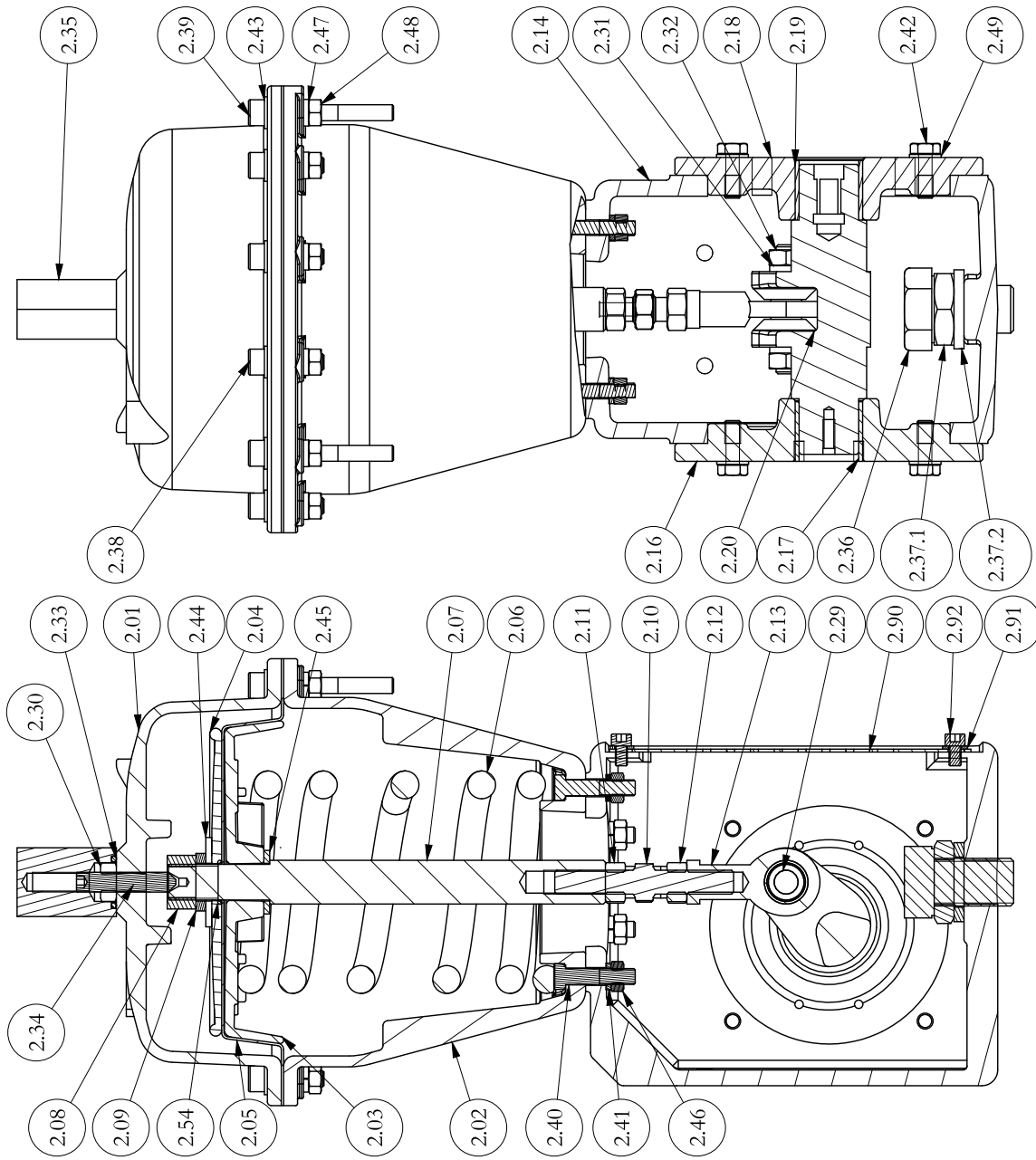

Modification of the rotation direction of the actuator
Rotary actuators concerned: 6225MK – 6280MK – 6350MK – 6430MK





2.92	2	SCREWS	Class 8.8
2.91	2	WASHERS	Class 8.8
2.90	1	PROTECTION	Aluminium
2.54	1	DIAPHRAGM O'RING	NBR
2.49	8	SIDE PLATE WASHERS	Class 8.8
2.48	12	NUTS	Class 8.8
2.47	12	SPRING WASHERS	Class 8.8
2.46	6	SPRING CASING NUTS	Class 8.8
2.45	1	WASHER	Class 8.8
2.44	1	LARGE WASHER	Class 8.8
2.43	12	WASHERS	Class 8.8
2.42	8	SIDE PLATE SCREWS	Class 8.8
2.41	6	SPRING CASING WASHERS	Class 8.8
2.40	6	SPRING CASING SCREWS	Class 8.8
2.39	3	LONG SCREWS	Class 8.8
2.38	9	SHORT SCREWS	Class 8.8
2.37.2	1	SPRING WASHER	Class 8.8
2.37.1	1	NUT	Class 8.8
2.36	1	LOWER MOTION LIMITER	Class 8.8
2.35	1	CAP	Aluminium
2.34	1	UPPER MOTION LIMITER	Class 8.8
2.33	1	CAP O'RING	NBR
2.32	2	NUTS	Class 8.8
2.31	2	SPRING WASHERS	Class 8.8
2.30	1	NUT	Class 8.8
2.29	1	LEVER SHAFT	AISI 304
2.20	1	ACTUATOR CRANK SHAFT	Cast Iron
2.19	1	REAR BUSHING	PTFE + Br...
2.18	1	REAR SIDE PLATE	Cast Iron
2.17	1	FRONT BUSHING	PTFE + Brass
2.16	1	FRONT SIDE PLATE	Cast Iron
2.14	1	ACTUATOR CASING	Cast Iron
2.13	1	SWIVEL	DIN 12240-4
2.12	1	RIGHTHANDED NUT	Class 8.8
2.11	1	LEFTHANDED NUT	Class 8.8
2.10	1	COUPLING SCREW RIGHT/LEFT	AISI 304
2.09	1	SPRING WASHER	Class 8.8
2.08	1	NUT	Class 8.8
2.07	1	ACTUATOR ROD	AISI 420
2.06	1	SPRING	Steel
2.05	1	DIAPHRAGM	EPDM
2.04	1	PLATE	Aluminium
2.03	1	DIAPHRAGM PLATE	Aluminium
2.02	1	SPRING CASING	Aluminium
2.01	1	DIAPHRAGM CASING	Aluminium
Tag	Qty.	Label	Material
			Spare

1. Removing the rear side plate [2.18]



Remove the 4 screws M8 with 13 mm wrench (DIN 931)

Rear side plate [2.18]

Thread M10 for coupling valve with actuator

2. Removing the front side plate [2.16]



Remove the 4 screws M8 with 13 mm wrench (DIN 931)

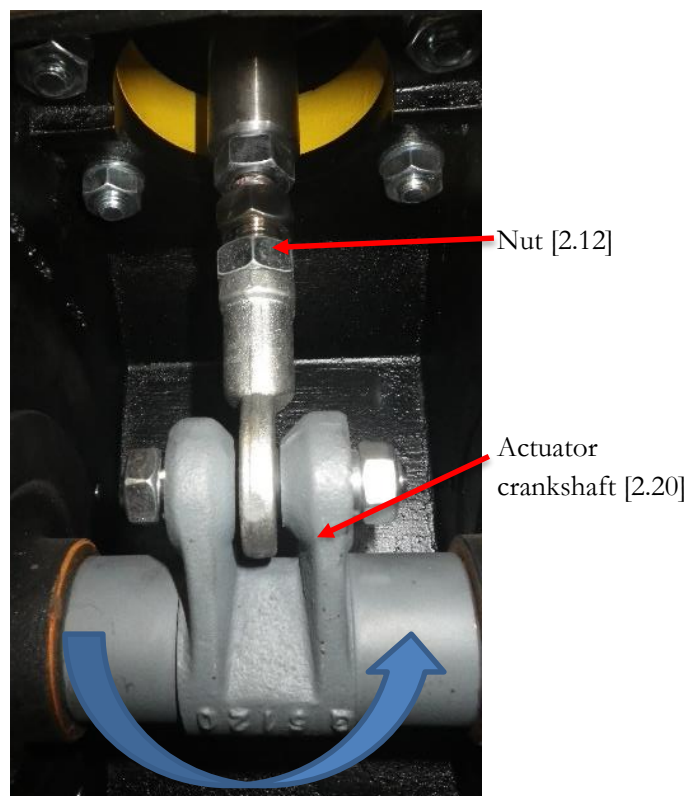
Front side plate [2.16]

- 3. Remove the protection grid [2.90] by removing socket head screws DIN 912 [2.92]**



- 4. Rotation of the actuator crankshaft [2.20]**

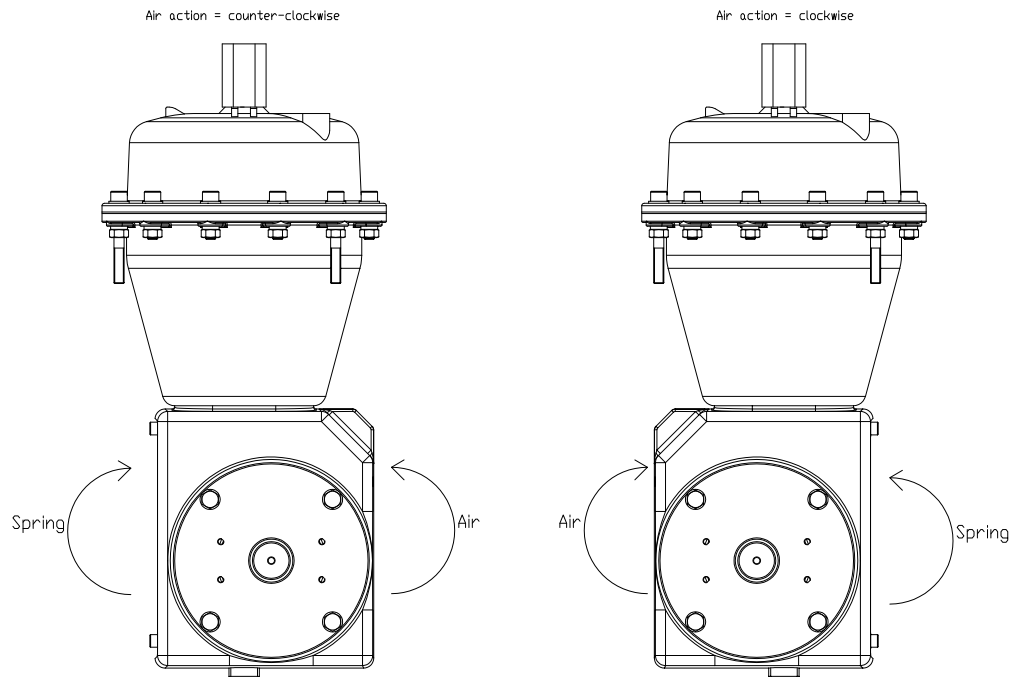
Loosen the nut [2.12] to be able to rotate the actuator crankshaft [2.20] of 180°
Then tighten the nut [2.12] to lock the screw



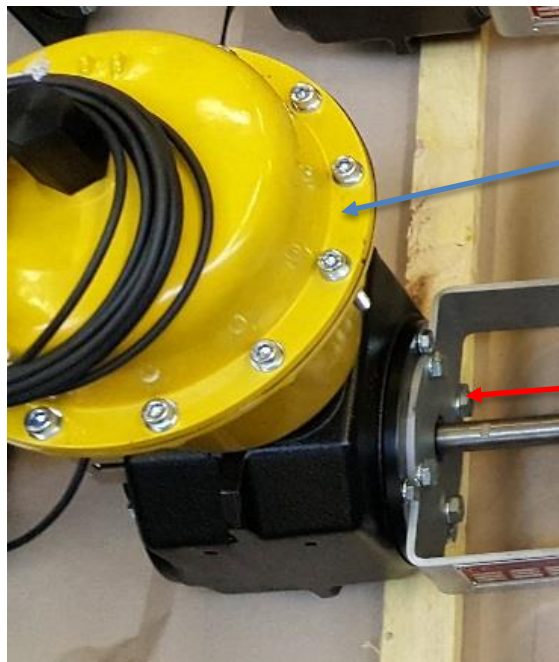
5. Reassembling the front side and rear side plate Tag [2.18] & [2.16]

Tighten the 4 screws DIN 931 of each plate
Be careful to reverse the side of each plate.

The actuator must be as on the drawing with the protection grid on the right



6. Reassembling the valve with the actuator



Counter-Clockwise actuator

Tighten the 4 screws M10 with 17 mm wrench (DIN 931)